

# SITESCAPES

---

2015 PRODUCT CATALOG

Shape. Substance. Style.



[SiteScapesOnline.com](http://SiteScapesOnline.com)



SiteScapes is a manufacturer dedicated to providing a comprehensive line of durable, steel site furnishings. SiteScapes products offer unlimited flexibility for design and landscape professionals, while providing quick and easy installation for contractors, maintenance crews or municipal personnel. Products include benches, trash receptacles, planters, bike racks, tables, tree grates and guards, and more.

# SITESCAPES

## WHO WE ARE

## SITE FURNISHINGS

Custom	4-5
Canopy	6-7
CityView Seating	8-9
CityView Receptacles	10-11
CityView Tables and Chairs	12-13
Arlington Seating	16-17
WestPort Seating	18-19
WestPort Receptacles	20-21
Stadium Tables	22-23
Barristo Seating and Bike Parking	24-25
Avondale Seating	28-29
Avondale Receptacles	30
Avondale Picnic Tables	31
TallGrass Seating	32-33
TallGrass Receptacles	34-35
Stransit Seating	36-37
Halo Receptacles	38
Newport Receptacles	39
Public Metro Seating	40
Cambridge Receptacles	41
Echo Bike Parking	42
Apex Bike Parking	43
Classic Bike Parking	43
Bike Post	44
Smoking Post	44
TerraFirma Tree Grates	45
Sustainability Information	46
Finishes	47
Warranty	47



### CONTACT

SiteScapes Inc. at  
[info@sitescapesonline.com](mailto:info@sitescapesonline.com)  
 888.331.9464  
[SiteScapesOnline.com](http://SiteScapesOnline.com)

SiteScapes products are made in the USA

Prices and specifications are subject to change. All prices F.O.B. factory. All shipping weights include crate enclosures and are estimates that may vary. Payment terms are 2% Prox 10 with prior credit approval.

© SiteScapes Inc. All Rights Reserved. Printed in USA.



# CUSTOM

---



## CREATIVE SOLUTIONS

We welcome the challenge of turning your unique concept or special need into a reality. Our custom products include the same great quality and attention to detail as our standard offerings and may be exactly what your site is looking for.

From custom lids that can convert any standard receptacle into something that meets your exact needs to custom art projects and installation pieces within your community, we're ready for any project.

Create brand awareness with vinyl decals showcasing your logo. Establish a lasting dedication with a custom cast aluminum plaque. Signage with laser cut lettering and emblems are a cost-effective way to interact with the community, and our custom capabilities allow for endless possibilities.







Clockwise from top-left:  
 SiteScapes's Powderline and fabrication  
 facilities; Custom laser cut logo and back  
 plate for Omaha's minor league farm  
 team; Goldenrod art installation/seating  
 for Omaha's Gene Leahy Mall, Take a  
 Seat project; TallGrass Fencing.



# CANOPY

---

## SEATING

Lightweight and stylish, the canopy bench series features cast aluminum ends and punched aluminum seats.

## OPTIONS

- › 6- or 8-foot lengths
- › Backed or backless
- › Optional end armrests
- › Powder coat or DuraCoat finish in choice of colors

## MATERIALS

- › End Units – cast aluminum
- › Perforated Seat – 1/8" aluminum sheet
- › Seat Supports – 1/4" aluminum plate
- › Support Pipe – 1" solid aluminum round bar







Backed



Backless

# CITYVIEW

---

## SEATING

A popular vertical strap design, the CityView bench is suited for many urban seating solutions. In addition to requiring no assembly, this bench remains maintenance free.

## OPTIONS

- › 6- or 8-foot length
- › Straight back, arched back or backless
- › Steel bar ends, cast iron ends or armless
- › 1 optional center armrest
- › Powder coat or DuraCoat finish in choice of colors

## MATERIALS

- › Seat Straps - 5/16" x 1 1/2" steel flat bar
- › Support Pipe - 1" dia. schedule 40 steel tubing
- › End Units - 1" square solid steel bar
- › Foot Plates - 1/4" x 1 1/2" stainless steel







Steel Bar Ends



Cast Iron Ends



No Armrests



Steel Radius Ends



Backless Cast Iron Ends



Backless Steel Bar Ends



Arch Back

# CITYVIEW

---

## RECEPTACLES

The CityView receptacles are durable trash containers with style. These receptacles bring balance to any urban setting while providing capacity for essential everyday refuse concerns.

## OPTIONS

- › 40-, 36- or 32-gallon capacity
- › Top, side door with latch or side-door with keyed lock
- › Surface, surface pedestal or embedded pedestal mount
- › Flat, dome, ash or enclosed top
- › Powder coat or DuraCoat finish in choice of colors
- › Recycling options available on all receptacles

## MATERIALS

- › Vertical Straps - 5/16" x 1 1/2" steel flat bar
- › Outside Support Strap - 1/4" x 2" steel flat bar
- › Top Ring - 5/8" dia. solid steel round bar
- › Foot Plates - 1/4" x 1 1/2" stainless steel
- › Lid - 14 ga. spun steel lid
- › Dome - 12 ga. spun steel dome
- › Ash Inlay - 13 ga. stainless steel ash pan
- › Liner - High Density Polyethylene liner with handles









# CITYVIEW

## TABLE AND CHAIRS

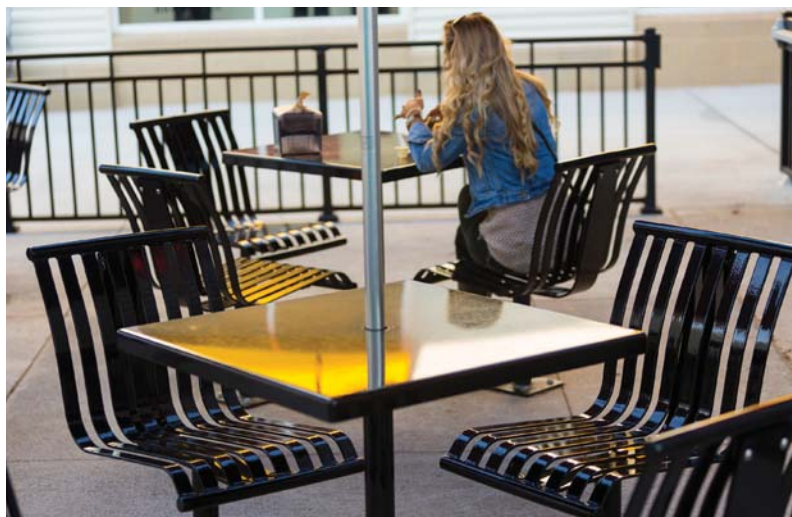
CityView tables utilize signature CityView collection vertical straps in a multitude of options and configurations. Stainless steel table tops provide maximum durability. Tables are offered in free-standing, carousel and picnic styles, and require minimal assembly.

### OPTIONS

- › Table size from 36- to 96-inches
- › Round, square, ribbon or rectangular table top shape
- › Variety of seating capacities or without seating
- › Freestanding pedestal-, four leg base-, surface- or embedded-mount
- › Carousel or center-post-suspended attached seating
- › Optional umbrella with fixture and hardware
- › ADA accessible options available on all tables

### MATERIALS

CityView Table materials vary greatly with build and configuration. Please refer to product specifications for product specific details.





Pedestal



Four Leg



Surface

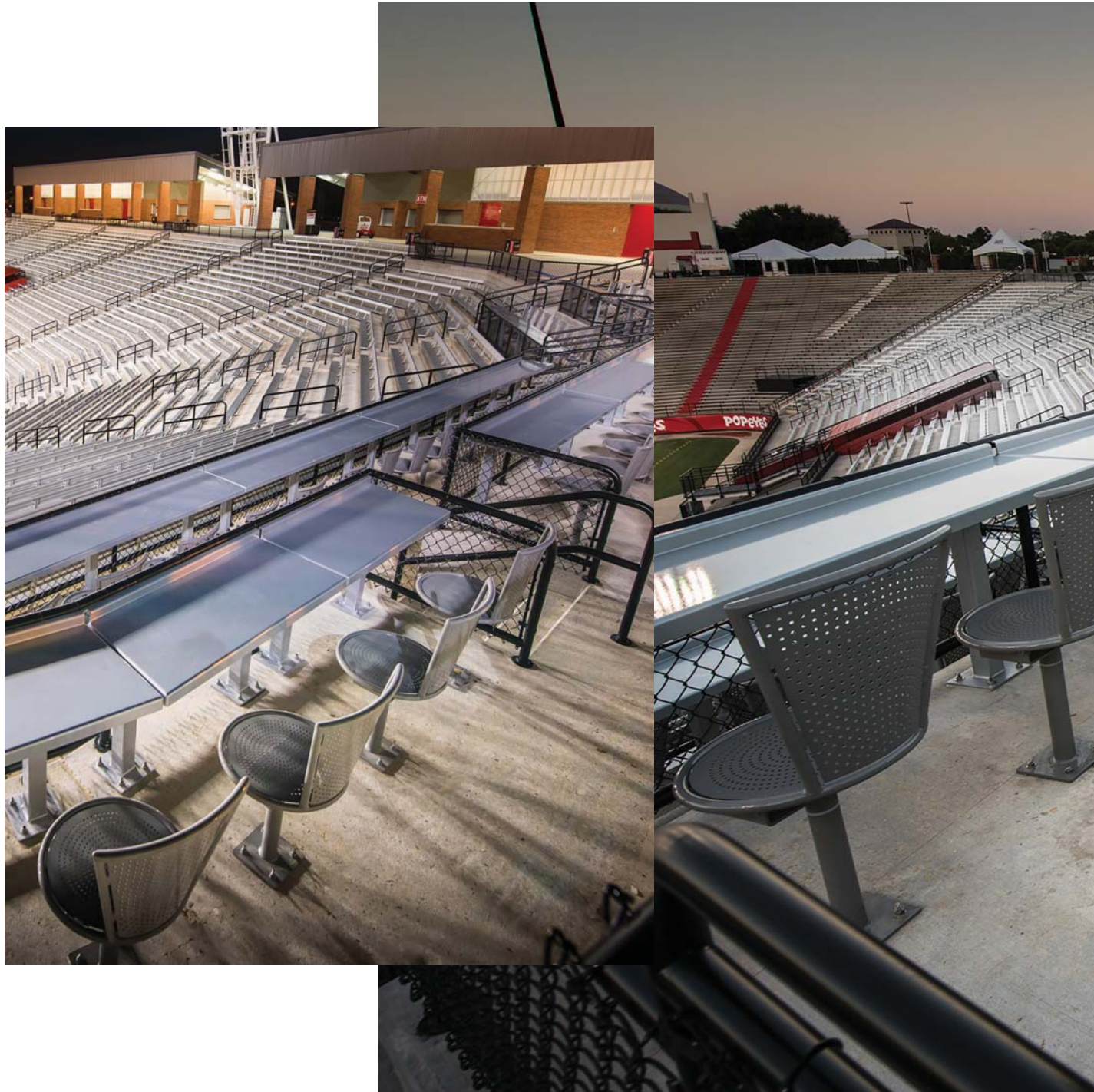


Carousel



Suspended





---

## STADIUM COLLECTION

See all stadium seating on page 22



MORE THAN A GAME



# ARLINGTON

---

## SEATING

Arlington benches feature beautiful decorative cast iron ends with ornamental filigree and looping symmetry. This classic Victorian bench is perfect for historic and traditional projects.

## OPTIONS

- › 6- or 8-foot length
- › Ipe hardwood or recycled plastic vertical or horizontal strap
- › 1 optional center armrest
- › Powder coat or DuraCoat finish in choice of colors

## MATERIALS

- › Seat straps – 1/4" x 1 1/2" steel flat bar; or 2" x 3" Nominal Ipe or recycled plastic
- › Support straps - 3/8" Flat BarSupport
- › Pipes - 1" dia. schedule 40 steel tubing
- › End units - 1" Cast iron with 9/16" mounting holes





Ipe Wood Slats



Recycled Plastic



Vertical Strap



Horizontal Strap



# WESTPORT

---

## SEATING

The WestPort bench utilizes horizontal seat straps. Each 1/4" seat strap is supported and held firmly in place by a series of braces. This type of engineering provides a durable and aesthetically pleasing product in all aspects.

## OPTIONS

- › 6- or 8-foot length
- › Backed or backless
- › Steel bar, cast iron, or steel radius loop ends, or armless
- › 1 optional center armrest
- › Powder coat or DuraCoat finish in choice of color



## MATERIALS

- › Seat Straps - 1/4" x 1 1/2" steel flat bar
- › Support Pipe - 1" dia. schedule 40 steel tubing
- › End Units - 1" square solid steel bar
- › Foot Plates - 1/4" x 1 1/2" stainless steel



Steel Bar Ends



Cast Iron Ends



No Armrests



Steel Radius Ends



Backless Cast Iron Ends



Backless Steel Bar Ends



# WESTPORT

---

## RECEPTACLES

The WestPort receptacle's unique shape and style set it apart from other receptacles. The WestPort is surrounded by a durable solid square bar framework and makes use of horizontal steel straps.

## OPTIONS

- › Top opening or side door with lock
- › Flat, dome or ash top
- › Powder coat or DuraCoat finish in choice of colors
- › Recycling options available on all receptacles

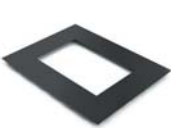


## MATERIALS

- › Horizontal Straps – 1/4" x 1" steel flat bar
- › Top Support – 1" dia. schedule 40 steel tubing
- › Bottom Support Bars – 5/16" x 3/4" steel flat bar
- › Side Support Bars – 1" sq. steel flat bar
- › Lid – .083 wall steel lid
- › Surface Mount Plates – 5/16" x 1 1/2" stainless steel
- › Liner – High Density Polyethylene liner with handles



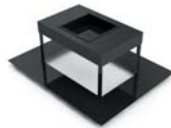




Flat Top



Dome Top



Ash Top

# STADIUM

## TABLES

Enjoy the action of the game in comfort with the SiteScapes Stadium Collection. Available in bar height or dining height, this baseball themed collection can incorporate team or sponsor logos and is perfect for any sports venue.

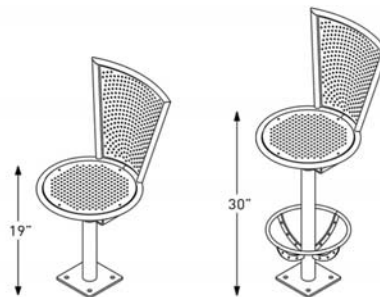
The Stadium Collection table is made with corrosion-resistant stainless steel and is available with a 24-inch round, square or home-plate-shaped table top. Each aluminum chair features its own 90 degree in-line swivel.

## OPTIONS

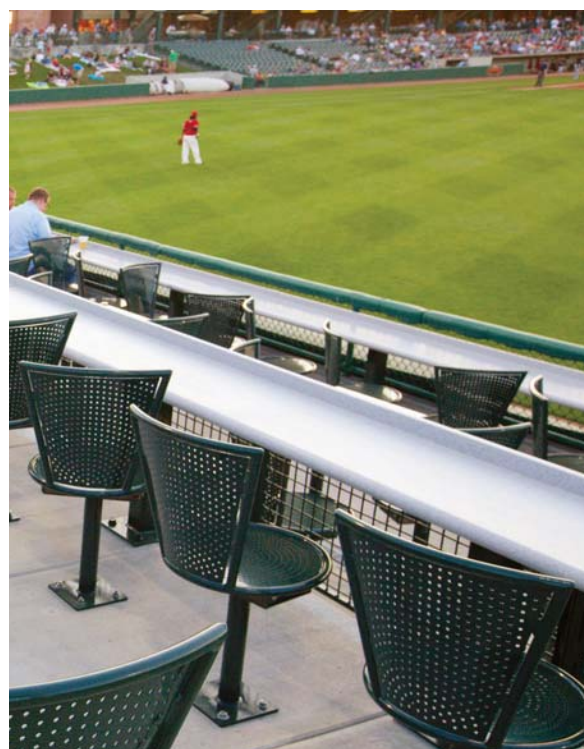
- › Dining Height: Excellent for café style areas, 19-in. seat height
- › Bar Height: Perfect for elevated-view or tiered seating, 30-in. seat height
- › Wall Mount Tables: Ideal for standing-room-only spaces, mounts via 1/2" o.d. concrete wedge anchor
- › ADA accessible options available on all tables

## MATERIALS

- › Table Top - 10 ga. stainless steel
- › Table Support - 2 3/8" o.d. steel tube
- › Chair Frame - 7/8" aluminum tube
- › Seat Panel/Back Rest - 10 ga. perforated aluminum
- › Chair Support - 2 3/8" o.d. steel tube
- › Base Plates - 8" square 3/8" thick stainless steel plate
- › Foot Rests - 5/8" solid steel rods







# BARRISTRO

---

## SEATING AND BIKE PARKING

Designed by Justin Brouillette, the Barristro collection was proposed as a small family of like-minded urban furnishings with an array of uses and users in mind. The collection's fluid geometry allows for modular pieces to interact in interesting and unique ways.

### OPTIONS

#### Seating

- › Backed or backless seat
- › Powdercoat or Duracoat finish in choice of colors

#### Bike post

- › Embedded or surface mount
- › Powdercoat or Duracoat or galvanized finish in choice of colors

### MATERIALS

- › Seating Area - 1/4" steel plate
- › Interior Tubes - 2" x 2" square tube
- › Foot Plates - 1/4" stainless steel







Backed Seat



Backless Seat



---

## TALLGRASS COLLECTION

See all TallGrass seating on page 32



# ROLLING PRAIRIES

# AVONDALE

---

## SEATING

Avondale benches utilize Ipe hardwood seating. This Brazilian hardwood weathers to a smooth and attractive finish while remaining extremely resistant to decay and insects. Recycled plastic can be substituted for wood on any Avondale product.

## OPTIONS

- › 6- or 8-foot length
- › Backed or backless
- › Steel bar, cast iron, or steel radius loop ends, or armless pedestal-mounted
- › 1 optional center armrest
- › Powder coat or DuraCoat finish in choice of color

## MATERIALS

- › Seat straps - 1"x4" Ipe hardwood or recycled plastic
- › Support pipe - 1" dia. schedule 40 steel tubing
- › End units - 1" square solid steel bar
- › Foot plates - 1/4" x 1 1/2" stainless steel
- › No visible hardware on seating or back rest surfaces







STANDARD PLASTIC COLORS AVAILABLE:

Cherry Wood, Cedar, Weathered Wood, Sand, Woodland Green, Black, Slate Gray, Light Gray and White.



PREMIERE PLASTIC COLORS AVAILABLE:

Brown, Redwood, Rust Brown, and Light Oak and White.



Steel Bar Ends



Cast Iron Ends



No Armrests



Steel Radius Ends



Pedestal Mount



Backless Steel Bar Ends



Backless Cast Iron Ends



Backless Pedestal Mount

# AVONDALE

---

## RECEPTACLES

The Avondale receptacles are durable trash containers featuring wood or recycled plastic vertical slats. Avondale receptacles will promote a green, litter free environment.

## OPTIONS

- › Surface-, surface pedestal- or embedded pedestal mount
- › Flat, dome, ash or enclosed top
- › Powder coat or DuraCoat finish in choice of colors

## MATERIALS

- › 2" x 4" Recycled Plastic or Wood Slats
  - › Interior Support Ring - 7 ga. steel
  - › Mounting Plates - 1/4" x 1/2" stainless steel
  - › Lid - 28" o.d. spun steel lid
  - › Liner - High Density Polyethylene
- 



Flat Top



Dome Top



Ash Top



Enclosed Top







## PICNIC TABLES

Avondale wood and recycled plastic picnic tables provide traditional group sitting options with bench seating perfect for parks and natural settings.

### OPTIONS

- › Table size from 36- to 96-inches
- › Round, square, ribbon or rectangular table top shape
- › Variety of seating capacities or without seating
- › Freestanding-, surface- or embedded-mount
- › Powder coat or DuraCoat finish in choice of colors
- › ADA accessible options available on all tables

### MATERIALS

Avondale Table materials vary greatly by build and configuration. Please refer to each item for product-specific details.





# TALLGRASS

---

## SEATING

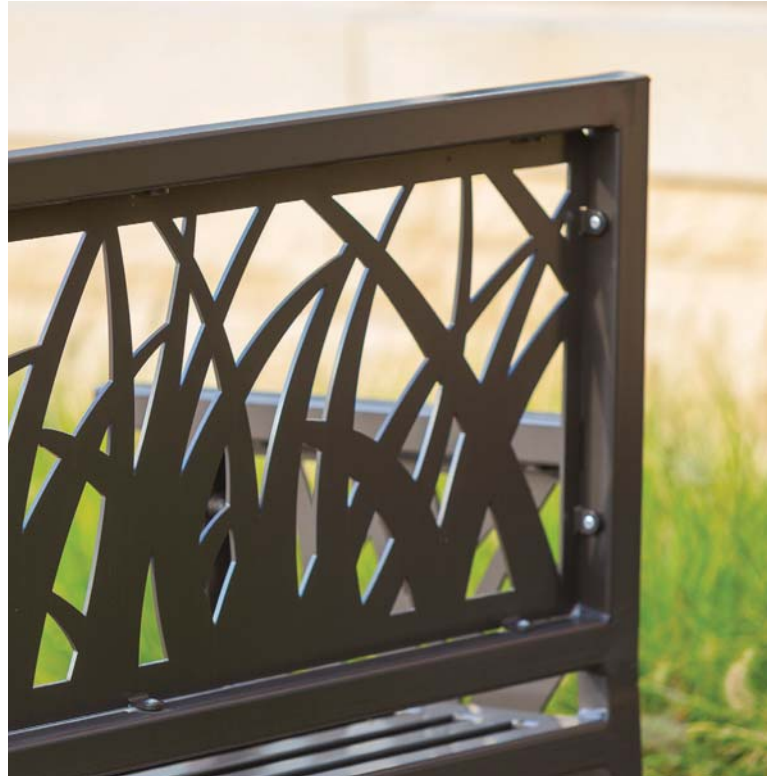
A variation of the JordanCreek, TallGrass seating utilizes a square tubing frame and accentuates its natural surroundings, while blending into a variety of urban settings.

## OPTIONS

- › 6- or 8-foot length
- › Backed or backless
- › 1 optional center armrest
- › Powder coat or DuraCoat finish in choice of colors

## MATERIALS

- › Frame - 1 1/2" sq. x 11 ga. wall steel tubing
- › Panels - 7 ga. steel sheet metal
- › Foot Plates - 1/4" x 1 1/2" stainless steel with 9/16" mounting holes







Backed Bench



Backless Bench

# TALLGRASS

---

## RECEPTACLES

The TallGrass receptacle utilizes the TallGrass pattern and is built in many variations, including a compact efficient receptacle, a square receptacle and a large round body receptacle.

## OPTIONS

- › 40-, 36- or 20-gallon capacity
- › Flat, dome, ash or enclosed top
- › Powder coat or DuraCoat finish in choice of colors

## MATERIALS

### Small Round

- › Container - 7 ga. steel shell
- › Removable Dome Lid

### 36 Gallon Square

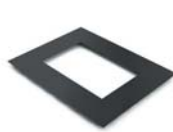
- › Frame - 1 1/2" sq. x 11 ga. wall steel tubing
- › Panels - 7 ga. steel sheet metal
- › 1/4" x 1 1/2" stainless steel

### 36 Gallon Round

- › Container - 7 ga. steel shell
- › Support Bars - 1" x 3/4" steel flat bar
- › Lid - 24" x .075" wall steel lid







Flat Top



Dome Top



Ash Top



Flat Top



Dome Top



Ash Top



Enclosed Top

# STRANSIT

---

## SEATING

Personal space in a public place is possible thanks to the modular design of Stransit seating. Each seat is individually mounted to the heavy duty base and can be outfitted with vertical or horizontal straps. Stransit seating is available in straight or custom contoured configurations.

## OPTIONS

- › 3- or 4-seats
- › Backed or backless
- › Vertical or horizontal strap
- › Powder coat or DuraCoat finish in choice of colors

## MATERIALS

- › Seat Straps – 1/4" x 1 1/2" steel flat bar
- › Support Bars – 1" solid steel round pipe
- › Seat Support Strap – 13/8" x 4 1/2" steel plate
- › Support Channel – 7 ga. steel plate
- › Pedestal Supports – 3" sq. steel tubing
- › Armrest – 2" x 1/4" steel flat bar
- › Surface Plate – 3/8" stainless steel







Backed



Backless



Custom Curve

# HALO

---

## RECEPTACLES

The Halo receptacle combines circular elements to capture multiple design dimensions. Featuring individual decorative rings, each receptacle is handcrafted to provide a classic appeal to any site.

## OPTIONS

- › 40- or 36-gallon capacity
- › Top opening, side door with latch or side door with lock
- › Flat, dome, ash or enclosed top
- › Powder coat or DuraCoat finish in choice of colors
- › Recycling options available on all receptacles

## MATERIALS

- › Container – 7 ga. laser cut steel sheet
  - › Inside support bars – 1/4" x 1/2" steel flat bar
  - › Decorative rings – 4" o.d. x 3/8" wall steel rings
  - › Foot plates – 1/4" x 1 1/2" stainless steel
  - › Lid – 14 ga. spun steel lid
  - › Dome – 12 ga. spun steel dome
  - › Ash inlay – 13 ga. stainless steel ash pan
  - › Liner – High Density Polyethylene liner with handles
- 



Flat Top



Dome Top



Ash Top



Enclosed Top







# NEWPORT

## RECEPTACLES

The Newport receptacle is a top opening, high volume trash receptacle designed for high traffic areas. The Newport receptacle design incorporates vertical straps and square steel bar supports into the can for a unique style.

### OPTIONS

- › 40- or 36-gallon capacity
- › Flat, dome, ash or enclosed top
- › Powder coat or DuraCoat finish in choice of colors
- › Recycling options available on all receptacles

### MATERIALS

- › Container – 7 ga. steel sheet
- › Top Ring – 1 1/2" Tubing
- › Support Bars – 1" Square steel bar
- › Surface Mount plates – 1/4" x 1 1/2" stainless steel plate
- › Lid – 14 ga. spun steel lid
- › Dome – 12 ga. spun steel dome
- › Ash Inlay – 13 ga. stainless steel ash pan
- › Liner – High Density Polyethylene liner with handles



Flat Top



Dome Top



Ash Top



Enclosed Top



# PUBLIC METRO

---

## SEATING

The Public Metro is a modular seating design suitable for a variety of public settings. Each tubular seat is individually mounted to the heavy duty base and is available in straight or custom curved configurations.

## OPTIONS

- › 3 or 4 seats available
- › Backed or backless
- › Metal rod or perforated aluminum
- › Powder coat or DuraCoat finish in choice of color

## MATERIALS

- › Seat Panels - 1/8" punched aluminum
  - › Seat Frames - 7/8" dia. x .095 wall aluminum tubing
  - › Support Legs - 2" dia. x 1/8" wall steel tubing
  - › Support Pipe - 3" o.d. steel tubing
  - › Surface Plates - 7 1/2" dia. x 1/4" thick stainless steel plate
- 



Backed Seating



Backless Seating



Custom Radius Option







# CAMBRIDGE

## RECEPTACLES

This 20-gallon, space-efficient receptacle offers a sleek, ultra-modern design and is super durable thanks to its steel shell. Its small footprint allows it to exist in settings where space is limited.

## OPTIONS

- > Dome or ash top
- > Stainless steel, powder coat or DuraCoat finish in choice of color
- > Recycling options available on all receptacles

## MATERIALS

- > Container - 7 gauge steel shell
- > Dome - 18" x .105" wall steel dome
- > Liner - High Density Polyethylene liner with handles



Dome Top



Ash Top

# ECHO

---

## BIKE PARKING

These popular serpentine style racks are rugged and space efficient. Users can park from both sides of the rack, and the Echo can be installed via embedded or surface flange mount.

## OPTIONS

- › 5-, 7-, 9-, 11- or 13-bike capacity
- › Embedded or surface mount
- › Powder coat, DuraCoat, galvanized or stainless steel finish in choice of colors

## MATERIALS

- › Tubing – 2 3/8" dia. schedule 40 steel tubing
- › Foot Plates – 7 1/2" dia. x 1/4" stainless steel





# APEX

---



## BIKE PARKING

These economical models are offered in single or double sided options” to “These racks feature a fully welded center parking grid for maximum bike security.

### OPTIONS

- › 2-, 6- or 10-bike capacity
- › Embedded or surface mount
- › Powder coat, DuraCoat, galvanized or stainless steel finish in choice of colors

### MATERIALS

- › Tubing – 2 3/8” dia. schedule 40 steel tubing
- › Foot Plates – 7 1/2” dia. x 1/4” stainless steel



# CLASSIC

---

## BIKE PARKING

Classic bike racks offer grid-style parking to accommodate many bikes. These racks feature a fully welded center parking grid for maximum bike security.

### OPTIONS

- › Single or double sided parking
- › Powder coat, DuraCoat, galvanized or stainless steel finish

### MATERIALS

- › End Units – 1 1/2” o.d. x 13 gauge steel tubing
- › Horizontal Support Tubes – 1 1/4” o.d. x 13 ga. steel tubing
- › Vertical Separation Bars – 5/8” o.d. solid steel bar
- › Surface Plates – 3/8” stainless steel plate

# BIKE POST

---

## BIKE PARKING

This space-efficient post can serve as a barrier and a bike rack. Various loop configurations are available and posts can be embedded or surface mounted.

### OPTIONS

- › 0-, 1- or 2-loops
- › Embedded or surface mount
- › Powder coat or DuraCoat finish in choice of color

### MATERIALS

- › Posts - 4 1/2" o.d. steel tubing
- › Loops - 1" steel tubing
- › Surface Plate - 7 1/2" o.d. steel



# SMOKING POST

---

## CIGARETTE RECEPTACLE

Smoking post bollards keep entrances or designated smoking areas clean and litter-free, and have a quiet, unobtrusive design.

### OPTIONS

- › Embedded or surface mount
- › Powder coat or DuraCoat and choice of colors

### MATERIALS

- › Posts - 4 1/2" o.d. steel tubing





# TERRAFIRMA

---

## TREE GRATES

These ADA approved cast iron tree grates allow for trees to co-exist with pedestrians in a variety of settings. TerraFirma grates have a starburst pattern and are available in a multitude of sizes and shapes.

The TerraFirma tree grates can have custom lettering and logos inserted at an additional cost.

## TREE GRATE FRAME

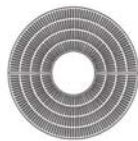
Steel angle frames used to position and mount the tree grate are available for both new and existing concrete.

## OPTIONS

- > 36-, 48- or 60-inch
- > Round or square
- > Raw or powder coat finish in choice of colors

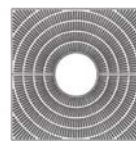
## MATERIALS

- > Tree Grate - 3/4" cast iron grate
- > Frame - 1/4" steel angle
- > Tree Grates are available in starburst and concentric circle patterns.



The round TerraFirma tree grates are available in the following sizes:

36" dia. (TF8-1011)  
48" dia. (TF8-1111)  
60" dia. (TF8-1211)



The square Terra Firma tree grates are available in the following sizes:

36" dia. (TF8-2011)  
48" dia. (TF8-2111)  
60" dia. (TF8-2211)

# SUSTAINABILITY

---

## LEED & ENVIRONMENTAL INFORMATION

SiteScapes thoroughly recognizes the critical importance of utilizing recycled materials in their benches and receptacles and embraces the opportunity to take part in the “Green Building” movement.

**STEEL:** SiteScapes, Inc. purchases its steel materials from steel mills that primarily utilize Electric Arc Furnace (EAF) technology. The EAF technology makes use of post-consumer scrap steel by melting it down for reuse in new steel materials.

SiteScapes, Inc. products are manufactured of primarily steel flat bar, steel solid square bar and steel sheet materials. As you can see from the data below, our mill vendors report excellent levels of recycled content in each of these materials allowing SiteScapes, Inc. to provide environmentally friendly steel products for use in “Green Building” applications or LEED programs.

Product Recycled Content  
Steel Bar Products 99%  
Steel Sheet Products 70%

**DUCTILE CAST - BENCH ENDS:** SiteScapes, Inc. ductile cast iron bench ends are poured with 60% post-consumer materials and 40% nodular pig iron. In addition, a small percentage of the make up of the nodular pig iron (iron ore, coke and limestone) is also post-consumer resources.

**GRAY CAST - TREE GRATES:** All tree grate base materials are 100% post-consumer materials. These materials are derived from the melting of shredded auto bodies, scrap steel, used engine blocks and more. No pig iron is utilized in this production process.

**WOOD:** SiteScapes, Inc. purchases its wood materials from IBAMA (Brazilian Institute for the Environment and the Renewal of Natural Resources) registered mills. All wood is certified to provide the product origin and compliance with all legal log harvesting policies. In addition, these mills participate in “Fields to Forests” reforestation programs. As a result, a tropical tree is replanted in a certified plantation program for every 500 board feet of lumber supplied.

**RECYCLED PLASTIC:** High Density Polyethylene (HDPE) is the only product used as the raw material base in the production of these items. No other products—such as wood, pulp, wood fiber or fiberglass—is used. 60% of all items used on our products derive from post consumer (recycled) or post industrial (scrap) materials.

---

As part of the Materials and Resource credits, LEED offers points for products that are extracted and manufactured locally. LEED has defined locally as a 500 mile radius from the project’s location. Because SiteScapes is located in Lincoln, NE we can provide site furnishings to a large section of the midwest that meet this criteria.

Other possible points include: SS 4.2 Bike Storage, SS 5.2 Open Space, MR Prerequisite Collection of Recyclables, MR 4.1 Recycled Content 10%, MR 4.2 Recycled Content 20%, and MR 7.0 Certified wood.

**For more information check out:**  
[www.sitescapesonline.com/sustainability.asp](http://www.sitescapesonline.com/sustainability.asp)



# FINISHES & WARRANTY

---

## FINISHES

SiteScapes, Inc. has a firm understanding that a quality powder coat finish is an essential ingredient to our site furnishings. That is why we offer two varieties of exterior rated, polyester, powder coat finishes for all of our products.

**POWDER COAT FINISH:** This protocol of cleansing, sealing, and coating is a 10-step process that creates an extremely corrosion-resistant, polyester finish in your choice of color. This finish makes surfaces impervious to rusting, fading or cracking. The powder coat finish remains virtually maintenance free and is accompanied by a one-year warranty.

**DURACOAT FINISH:** This finish includes all of the process implemented in powder coating including shot blast, phosphatizing and pre-treatment. Additionally, DuraCoat finished products receive a zinc-rich epoxy undercoat that is applied prior to the TGIC polyester colored top coat. This provides a corrosion-resistant layer to seal all welded joints and surfaces. The end result is an extremely durable abrasion-resistant coating that is accompanied by a five-year warranty. DuraCoat finish is highly recommended for high salt content environments.

**COLOR OPTIONS:** Onyx (Black), Cobalt (Dark Blue), Forest (Green), Brandywine (Burgundy), Ivory, Sterling (Silver), Slate (Dark Gray), Bronze (Brown), Pearl (White).

\*Custom colors available upon request

### STANDARD POWDER OPTIONS



### RECYCLED PLASTIC OPTIONS

**STANDARD COLOR OPTIONS:** Cherry Wood, Cedar, Weathered Wood, Sand, Woodland Green, Black, Slate Gray, Light Gray, White.



Premiere Colors available: Brown, Redwood, Rust Brown, and Light Oak.



Colors shown are only a representation of standard colors offered and should not be used as a substitute for manufacturer provided paint chips or samples.

## LIMITED WARRANTIES

Limited twenty year warranty against structural failure of steel bench frames or steel bench assemblies, table frames, trash receptacle frames and planter frames. Limited 10 year breakage warranty on all ductile cast iron bench ends and components. Limited 5 year warranty against structural failure of any aluminum assemblies, frames or components. Limited three year warranty against structural failure of all bicycle racks. SiteScapes, Inc. liability and the buyer's remedy under these warranties are limited to the repair, replacement or refund of the purchase price, at SiteScapes option, of products determined in SiteScapes reasonable judgment to be defective in workmanship or materials. SiteScapes will not be held responsible for the costs incurred in labor to remove, install, or replace the alleged defective product. SiteScapes warranties do not cover any defects or failures resulting from vandalism, negligence, accidents, abuse, lack of maintenance, improper use or installation, or unapproved modifications and repairs. In addition, SiteScapes will not be held liable for ANY damage or injury as a result of product that is not permanently anchored in place or not anchored properly.

